



“The Perfect Location”

Hideaway Ridge is only 10 minutes from the Barren River State Park, and 20 minutes from Glasgow, KY with nearby access to great shopping and quality medical facilities. Entertainment options with Mammoth Cave & Bowling Green, KY are a short drive away.



Enjoy lake life to the fullest at our Hideaway Ridge Development!

Hideaway Ridge Development
Located only 10 minutes from Barren River State Park

Barren River Lake State Resort Park is a water-lover’s paradise surrounded by forested rolling hills. The resort is located just a short drive from Kentucky’s famous cave area, which includes Mammoth Cave National Park, the longest cave system in the world!

Park Features & Recreational Facilities

Louie B. Nunn Lodge — Surrounded by rolling, tree covered hills, the lodge overlooks the beautiful 10,000 Acre Lake. The lodge has rooms with lake facing balconies and offers full amenities or try out a 2 bedroom, 2 bath cabin or upgrade to a villa with a gas fireplace.

Camping — Let the sounds of the outdoors lull you to sleep. Utility hook ups are available. For your camping convenience, a dump station and two central service buildings with showers and rest rooms are offered.

Dining — Enjoy the cuisine at the Driftwood Restaurant or have a cocktail at the Highland Pub, located in the Louie B. Nunn Lodge.

Boating — Barren River Lake provides endless hours of entertainment for the boating enthusiast. The Marina has a launching ramp, and rentals for fishing boats, pontoons, and houseboats. *Open year round.*

Fishing — Barren River Lake is unsurpassed for fishing pleasure. With an abundance of largemouth, white, and hybrid striped bass, bluegill, channel catfish, crappie, and rough fish, you are sure to get a bite!

Golf — Enjoy a “par”fect day on the 18-hole, regulation golf course. A fully equipped pro shop, riding carts, and rental clubs are available. *Course open year-round, weather permitting.*



KENTUCKY LAKEFRONT PROPERTIES

Hideaway RIDGE

Office 270-646-3199 (Days 8 am - 4:30 pm)
270-622-8500 (Evenings)
www.barrenlake.com

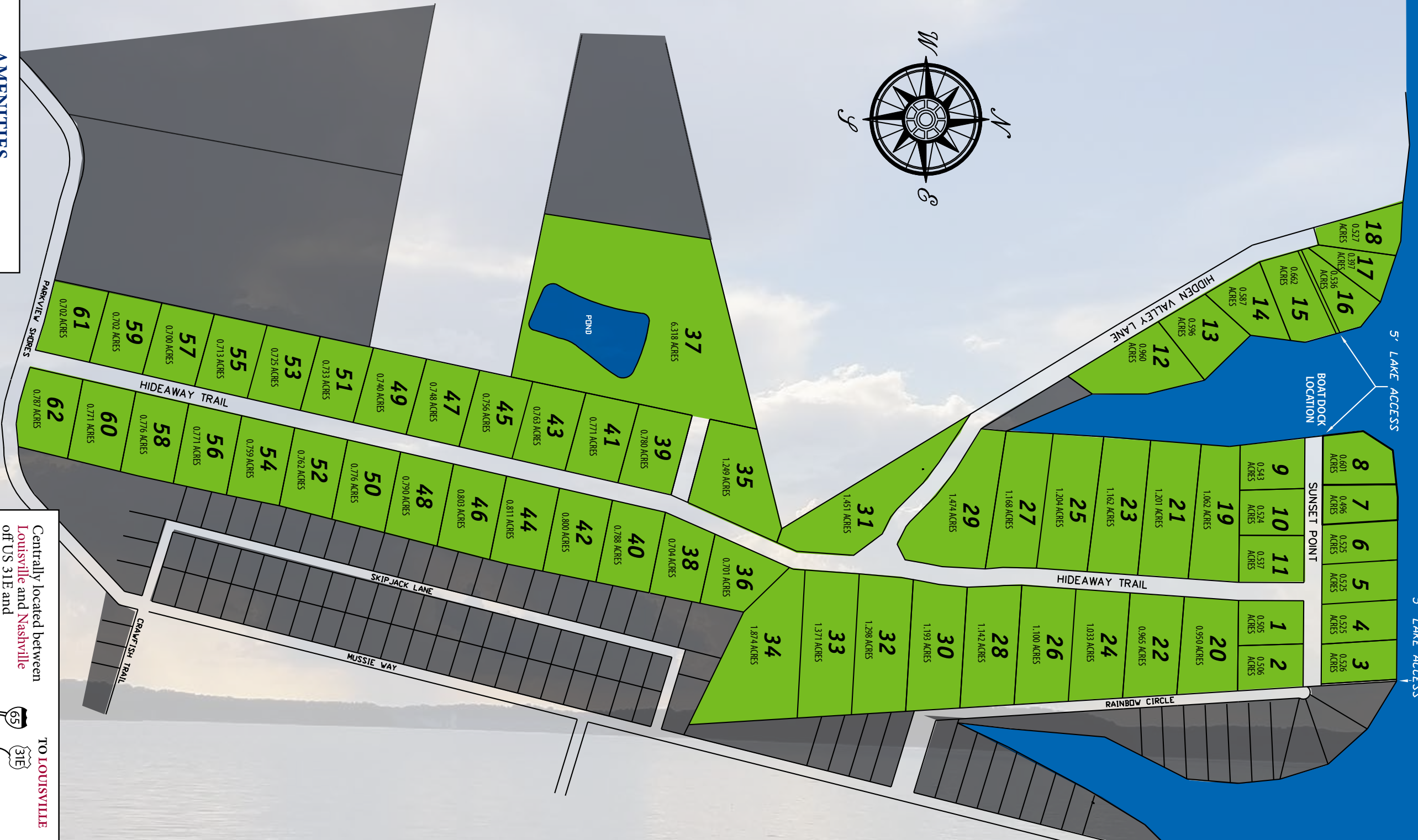
*For Price Information email
jimmyharston@yahoo.com
or call 270-646-3199*

**Hideaway Ridge location:
355 Parkview Shores Road
Scottsville, KY 42164
1.5 Hours South of Louisville
1 Hour North of Nashville**

Centrally located between Louisville and Nashville off US 31-E and convenient to I-65

*No required time to start building
DEVELOPERS*

Chad Harston Cell 270-622-8500
Jimmy Harston



AMENITIES

- Stone Entrance
- Underground utilities, city water
- High speed fiber optic internet
- Zoned for boat docks

NOTE: Hideaway Ridge is a planned community with comprehensive deed restrictions and design standards to protect the value of the property. Subject to annual maintenance fees.

