



Barren River is an excellent place for float trips in canoes, or kayaks to enjoy the great outdoors.

For Price Information email to jimmyharston@yahoo.com or call 270-646-3199



Fishing

Barren River also is unsurpassed for fishing pleasure. With an abundance of largemouth, white, and hybrid striped bass, bluegill, channel catfish, crappie, and rough fish, you are sure to get a bite.



Barren River State Park is located approximately 15 minutes from Riverbend Ridge. It has a large public swimming beach, golf, tennis, bicycling trail, and horseback riding.

The lodge restaurant has a large dining room serving breakfast, lunch and dinner. There are food markets, fishing supply stores, gas stations and restaurants located within 5 minutes from Riverbend Ridge.



Golf

Enjoy a "par"fect day on the 18-hole, regulation golf course. A fully equipped pro shop, riding carts, and rental clubs are available. 18-hole Golf packages available.



Jimmy & Randy Harston, owners, are pleased to offer these very desirable river front farms. This unique development allows you to have large waterfront acreage farms with all the privacy you've ever dreamed of. You can walk out your back door into beautiful Barren River. Your river front property line being the center of the river, allows you to build your dream house right on the river front. This development is designed for both permanent & weekend retreat owners to enjoy their own river front farm with privacy and protection. The location of River Bend Ridge places you within minutes of I-65, Bowling Green, Scottsville, Barren River State Park, beaches, golf, hospitals and schools. This river front development is the best Kentucky has to offer.

Barren River's Most Prestigious River Front Properties

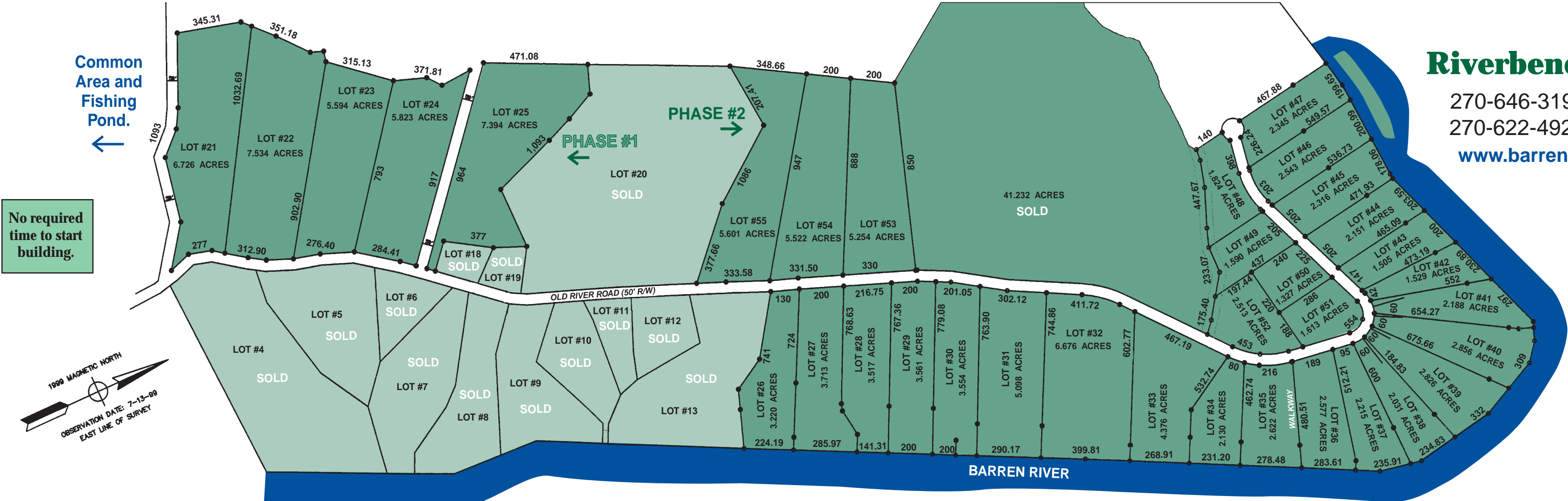
Riverbend Ridge



FOR INFORMATION CALL
(270) 646-3199 (Days 8-5)
(270) 622-4925 (Evenings)
Email - jimmyharston@yahoo.com

Riverbend Ridge

270-646-3199 (Days 8-5)
 270-622-4925 (Evenings)
www.barrenlake.com



Riverbend Ridge

DIRECTIONS TO OFFICE

(Directly across from Barren River State Park Entrance)

FROM LOUISVILLE (1.5 Hours):
 Take 1-65 South to Exit #53 to Barren River State Park

FROM NASHVILLE (1 Hour):
 Take I-65 North to Exit #6 to Hwy. 100 East to Scottsville;
 31E North to Barren River State Park

FROM OFFICE TO RIVERBEND RIDGE:
 Take 31E South 3 miles to Highway 252, turn right 3.8 miles to 1533, turn left exactly 2.3 miles to Erwin Road (top of hill), turn right go 1.9 miles straight into Riverbend Ridge.

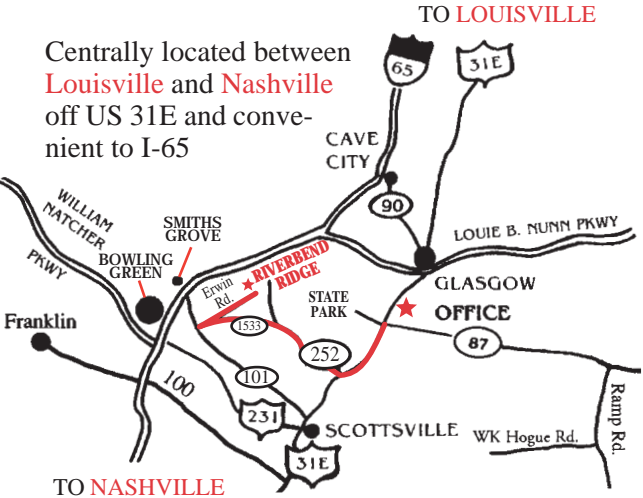
Developers

Jimmy Harston cell 270-618-0777
 Chad Harston cell 270-622-8500

AMENITIES

- Stone entrance with electric security gates
- Underground utilities, city water
- Common area with hiking woods and fishing pond
- Blacktop streets surrounded by beautiful farm land
- Farms surrounded by trees
- Main river channel offers year round water access

NOTE: Riverbend Ridge is a planned community governed by a Home Owners Association. Comprehensive deed restrictions and design standards have been established to protect the value of the property.



The unique combination of natural setting charm, abundant wildlife, forested woods, absolute serenity and convenience to all the local amenities makes this community the best place in Kentucky to build your home.